

Vet Ultrasound

# Veterinary Solutions without Compromise

**MyLab40<sup>TM</sup>** **VET**



**e**saote  
piemedical



## No Compromises



### > Versatile Technology

The MyLab40Vet is a compact console ultrasound system designed to be the ideal solution for the modern small or mixed animal veterinary clinic. Developed on the acclaimed MyLab platform, the MyLab40Vet's license-based modular architecture can be configured to meet the individual needs of its users in various applications. The multiple standard (for example TEI™, Tissue Enhanced Imaging) and optional features make the MyLab40Vet a highly flexible system that offers every user the highest quality image for their particular specialization.

### > Efficiency through Design

The MyLab40Vet's high sensitivity color and CW and PW Doppler images are displayed on its 19" LCD monitor, increasing user comfort and reducing eyestrain. At the same time, the MyLab40Vet's streamlined console with space for peripherals such as printers or video recorders is easy to move from room-to-room, and the system's full-size keyboard has been designed to be both user-intuitive and ergonomic; all factors that contribute to better workflow and efficiency.



- > Color, CW and PW Doppler Imaging
- > Modular Architecture
- > Ergonomic, Compact Design

**MyLab40<sup>TM</sup>VET**

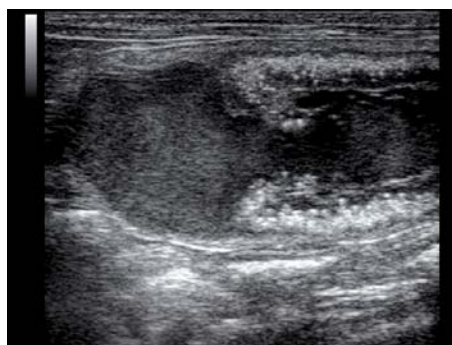


#### > Full-range of Applications

Based on the MyLab World modular architecture, the MyLab40Vet offers a wide range of application packages and can be personalized to every user's specific needs. The Cardiology, Vascular and General Imaging modules are standard with the system, while the MyLab40Vet can be further configured to include modules for Reproductive and Contrast Imaging among others. Specific Cardiology features are also available, such as Compass M-Mode and real-time Tissue Velocity Mapping.

#### > Comprehensive Choice of Probes

The MyLab40Vet is engineered specifically to meet the needs of the modern veterinarian. Every system has three probe connectors to be used with various high-density phased array, convex and linear transducers (up to 18MHz), including an endorectal linear probe. It is also possible to configure the MyLab40Vet to use Esaote-Pie Medical's CnTI<sup>TM</sup> (Contrast Tuned Imaging) module and CnTI-compatible probes.



Feline: abnormal amniotic sac and placental abruption



Canine: abdominal aorta, renal artery



Avian: fully-formed egg



> Phased Array,  
Convex, Linear  
and Endorectal Probes



- > Digital Archiving & Full Connectivity
- > Wireless Technology
- > Easy Image Management

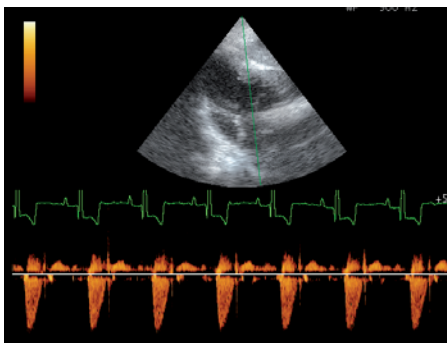


#### > Innovative USB/DVD Solutions

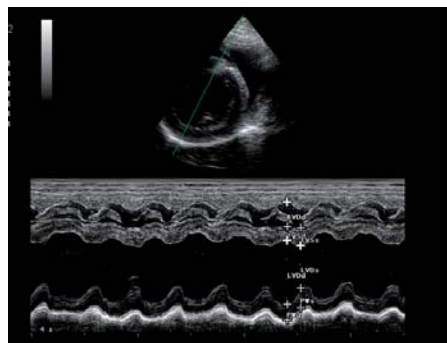
The MyLab40Vet integrates modern USB and CD/DVD image and data management capabilities. Images can be saved in various formats (BMP, JPEG, clips), and when selecting the final storage destination, the operator can easily choose from the integrated hard disk, DVD/CD burner, personal USB memory drive and/or network storage. Additionally, several types of USB and PC printers can be used, with or without the MyLab40Vet's wireless technology options.

#### > MyLab Desk

The latest image management solution from Esaote, MyLab Desk, is an ideal solution for private offices, increasing their workflow and productivity. MyLab Desk uses the MyLab40Vet's user interface on a standard PC, allowing comfortable reviewing and processing with all the features of the PC. It offers the modern veterinary ultrasound professional a flexible way to connect their MyLab40Vet to their PC, easily.



Canine: aortic stenosis



Canine: left ventricle measurements



MyLab Desk



## MyLab40<sup>TM</sup> VET



0344

ISO 13485:2003 ISO 9001:2000

Windows<sup>®</sup> is a registered trademark of Microsoft Corporation

833 0819 000 (MA Rev. A)

### Esaote S.p.A.

International Activities: Via di Caciolle, 15 50127 Firenze, Italy, Tel. +39 055 4229 1, Fax +39 055 4229 208, international.sales@esaote.com

[www.esaote-piemedical.com](http://www.esaote-piemedical.com)

#### FRANCE

Esaote France S.A.R.L.  
22, rue Pierre Grange, 94124 Fontenay-sous-Bois  
Tel. +33 1 4871 2525, Fax +33 1 4871 3630  
esaote.france@wanadoo.fr

#### GERMANY

Esaote Biomedica Deutschland GmbH  
Ludwigstraße 47, 85399 Hallbergmoos  
Tel. +49 811 9986 490, Fax +49 811 9986 4950  
esaote@esaote.de

#### SPAIN

Esaote España S.A.  
Avda San Sebastian, s/n 08960 Sant Just Desvern, Barcelona  
Tel. +34 93 473 2090, Fax +34 93 473 2042  
info@esaote.es

#### THE NETHERLANDS AND BELGIUM

Pie Medical Benelux B.V.  
P.O. Box 1132, 6201 BC Maastricht  
Tel. +31 43 3824650, Fax +31 43 3824651  
benelux@pie.nl

#### USA

Biosound Esaote Inc.  
8000 Castleway Drive, P.O. Box 50858, Indianapolis, IN 46250  
Tel. +1 317 813 6000, Fax +1 317 813 6600  
info@biosound.com

#### CHINA

Esaote China Ltd  
18/F, 135 Bonham Strand Trade Centre,  
135 Bonham Strand, Sheung Wan, Hong Kong  
Tel. +852 2545 8386, Fax +852 2543 3068  
esaote@esaotechina.com

#### RUSSIAN FEDERATION AND CIS

Esaote S.p.A.  
18 Leningradsky prospekt, off. 5 and 6, Moscow 125040  
Tel. +7 495 232 0205, Fax +7 495 232 1833  
esaotemoscow@mtu-net.ru info@esaote.ru

#### ARGENTINA

Esaote Latinoamérica S.A.  
San Martín 551, Cuerpo 'C', Piso 8, (C1004AAK) Buenos Aires  
Tel. +54 11 4326 1832, Fax: +54 11 4328 1245  
info@esaote.com.ar